

## CHEMISTRY

## Is graphite lithiophobic or lithiophilic?

Jian Duan<sup>1,†</sup>, Yuheng Zheng<sup>1,†</sup>, Wei Luo<sup>1,\*</sup>, Wangyan Wu<sup>1</sup>, Tengrui Wang<sup>1</sup>,  
Yong Xie<sup>1</sup>, Sa Li<sup>1</sup>, Ju Li<sup>2,\*</sup> and Yunhui Huang<sup>1,\*</sup>

## ABSTRACT

Graphite and lithium metal are two classic anode materials and their composite has shown promising performance for rechargeable batteries. However, it is generally accepted that Li metal wets graphite poorly, causing its spreading and infiltration difficult. Here we show that graphite can either appear superlithiophilic or lithiophobic, depending on the local redox potential. By comparing the wetting performance of highly ordered pyrolytic graphite, porous carbon paper (PCP), lithiated PCP and graphite powder, we demonstrate that the surface contaminants that pin the contact-line motion and cause contact-angle hysteresis have their own electrochemical-stability windows. The surface contaminants can be either removed or reinforced in a time-dependent manner, depending on whether the reducing agents ( $C_6 \rightarrow LiC_6$ ) or the oxidizing agents (air, moisture) dominate in the ambient environment, leading to bifurcating dynamics of either superfast or superslow wetting. Our findings enable new fabrication technology for Li-graphite composite with a controllable Li-metal/graphite ratio and present great promise for the mass production of Li-based anodes for use in high-energy-density batteries.

**Keywords:** wetting, contact-line hysteresis, surface-pinning defects, electrochemical-stability windows, Li-graphite composite

## INTRODUCTION

Lithium metal is the ‘holy grail anode’ for rechargeable batteries due to its low potential ( $-3.04$  V vs. standard hydrogen electrode) and high theoretical specific capacity ( $3861$  mAh/g) [1–5]. However, challenges due to unstable solid electrolyte interphase, non-uniform deposition, dendritic penetration and volume change have hindered its application [6–9]. Much effort has been dedicated to making improvements, such as electrolyte optimization [10–12] and interfacial engineering [13]. Another attractive route for addressing these problems is to manufacture a Li-metal–matrix composite anode by incorporating body-centered cubic Li metal ( $Li_{BCC}$ ) into a conductive matrix, which can maintain a stable volume and shape upon repeated electrochemical cycling [14–17].

Various carbonaceous hosts including reduced graphene oxide [18], porous graphene networks [19] and porous carbon film [20] have been investigated as the matrices to host  $Li_{BCC}$ . To fabricate the composite, the wettability between molten Li ( $Li_{liq}$ ) and graphite matrix is crucial. Unfortunately,

it was generally accepted that graphite is lithiophobic and  $Li_{liq}$  shows poor spreading on a graphite surface [21]. Recent studies have suggested that coating a layer of Li-reactive material such as Si and the interfacial reaction between Li and the coating material drive the lithiophobic-to-lithiophilic transition [22,23]. However, such a change in liquid-spreading behavior is due to the replacement of the graphite by the reactive coating. Consequently, it might be asked whether graphite is intrinsically lithiophobic or lithiophilic.

We note three conceptual subtleties with the posing of this question. First, textbook Young’s equation is defined for immiscible or *non-reactive* bulk phases  $\alpha$  (solid substrate),  $\beta$  ( $Li_{liq}$ ) and  $\delta$  (vapor):

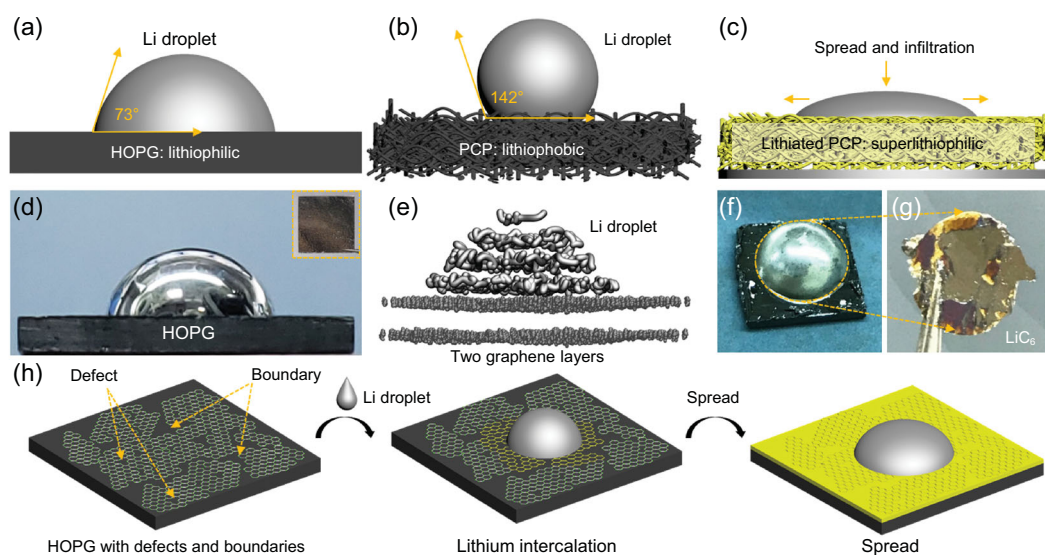
$$\gamma_{\alpha\beta} + \gamma_{\beta\delta} \cos \theta_{\alpha\beta} = \gamma_{\alpha\delta}, \quad (1)$$

when no bulk phase change is happening and the only thing that could change is the physical interfacial contact line controlled by the interfacial tension forces  $\gamma_{\alpha\beta}$ ,  $\gamma_{\beta\delta}$  and  $\gamma_{\alpha\delta}$  [24]. In a so-called ‘reactive-wetting’ scenario, however, the bulk phases

<sup>1</sup>Institute of New Energy for Vehicles, School of Materials Science and Engineering, Tongji University, Shanghai 201804, China and <sup>2</sup>Department of Nuclear Science and Engineering and Department of Materials Science and Engineering, Massachusetts Institute of Technology, Cambridge, MA 02139, USA

\*Corresponding authors. E-mails: weiluo@tongji.edu.cn; liju@mit.edu; huangyh@tongji.edu.cn  
†Equally contributed to this work.

Received 2 September 2019;  
Revised 19 December 2019;  
Accepted 28 December 2019



**Figure 1.** Li wettability with graphitic carbon substrates. Schematic of ACA measurement of liquid Li droplet on (a) HOPG and (b) PCP. (c) A wettability transition from lithiophobic to superlithiophilic of PCP occurs due to the Li intercalation into the PCP and phase change from  $C_6$  to  $LiC_6$ . Photos of liquid-Li droplet on (d) HOPG and inset is top view of HOPG. (e) *Ab initio* MD calculation of a Li droplet/HOPG system at 500 K. (f, g) Top view of the liquid-Li droplet on the HOPG after cooling down to room temperature and a few lithiated graphite layers from HOPG still adhered to Li after peeling off the Li droplet from the HOPG. (h) Schematic of the mechanism for spreading the Li droplet on the HOPG.

themselves (e.g. the substrate  $\alpha$ ) could be undergoing bulk reactions. One can still measure an apparent contact angle (ACA)  $\theta_{\alpha\beta}$  at a certain time  $t$  at a certain observation-length scale, but if  $\alpha$  is changing with time, so can  $\theta_{\alpha\beta}(t)$ . Since bare graphite ( $C_6$ ) reacts with  $Li_{liq}$ :  $C_6 + Li_{liq} = LiC_6$  as a bulk phase change, with a *bulk* Gibbs-free energy difference, reactive wetting is also an issue here, just as with a Si coating. Second, we note that, generally speaking, as lithiation proceeds, the absolute electrochemical potential of the substrate  $U^\alpha$  changes and certain surface chemical groups that were thermodynamically stable at previous  $U^\alpha$  may cease to be; for example,  $O^*$  (where  $*$  stands for surface site on  $\alpha$ ) may turn into  $(Li_xO)_n^*$  clusters. This means that, even if there was *no* bulk phase transition, the equilibrium  $\theta_{\alpha\beta}^{eq}$  should still be a function of  $U^\alpha$ . Thus, instead of asking ‘what is the wetting angle of  $\beta$  on  $\alpha$ ?’ , the more appropriate question should be ‘what is the wetting angle of  $\beta$  on  $\alpha$  at *that* potential?’. Third, there are issues of kinetics (not just thermodynamics), fluid dynamics and geometry, when talking about the phenomenology of the  $\beta$  phase physically spreading on or infiltrating into  $\alpha$ . Because the interfacial tensions of Eq. (1) are physically driving the convections [25] and because the  $\beta$ -phase-geometry changes also affect the mass transport and later bulk phase change as well, this causality chain affects how the  $\beta$  phase moves through the potentially intricate geometries of  $\alpha$ . If there are certain slow steps in the causality chain (e.g. bulk diffu-

sion or electron-tunneling induced surface chemical group decomposition [26]), then it could take significantly longer to cover so much area of a porous substrate than a fully dense, non-porous substrate.

To address these questions, we conducted ACA measurements with a molten  $Li_{liq}$  drop on highly ordered pyrolytic graphite (HOPG), which is fully dense, and also on porous carbon paper (PCP), which is porous, inside a glovebox. We observed that the HOPG substrate immediately allows an ACA of  $73^\circ$  with  $Li_{liq}$  (Fig. 1a). This is the first demonstration, to our knowledge, that graphite can be considered ‘lithiophilic’, which is encouraging from the view of fabricating Li-metal–matrix composite by  $Li_{liq}$  infiltration. However, when placing a molten  $Li_{liq}$  drop on PCP in the glovebox, the ACA is as large as  $142^\circ$  (Fig. 1b) and  $Li_{liq}$  infiltration does not appear to happen at all on the timescale of  $10^3$  seconds. There may be two possible explanations for this: (i) although the PCP fibers consist of largely graphitic carbon, the composition and thermodynamics could be somewhat different from those of HOPG; (ii) kinetics could be in play here: there could be certain impediments (surface contaminants) to the  $Li_{liq}$  phase infiltrating the pores, pinning the contact lines, and, if it takes too long to infiltrate, the trace  $O_2$ ,  $CO_2$ , etc. in the glovebox could become new impediments to form a solid oxidation layer on the  $Li_{liq}$  surface that further slows down the infiltration. After careful analysis and modeling, we have determined that (ii) is the likely cause.

To show this, we first pre-lithiate PCP to  $\text{PCP}_{\text{lithiated}}$  with almost equal porosity. This makes the substrate much more reducing electrochemically. We find that, while PCP exhibits apparent lithiophobicity, the same porous paper structure changes to superlithiophilic upon the phase change from  $\text{C}_6$  to  $\text{LiC}_6$  (Fig. 1c). This means the viscosity of  $\text{Li}_{\text{liq}}$  and the pore diameter of PCP cannot be the limiting factors to infiltration; instead, the  $\text{C}_6 \rightarrow \text{LiC}_6$  phase change and the  $U^\alpha$ -dependent  $\theta_{\alpha\beta}^{\text{eq}}$  could be the cause here due to the fact that some surface chemical groups (surface contaminants) pinning the contact line could be removed at this potential. Based on our findings, a new liquid-metal-infiltration fabrication process for Li-PCP composite has been developed with a controllable Li/PCP mass ratio. Encouragingly, a large piece of Li-PCP composite anode was successfully prepared and showed excellent performance in pouch-type Li-S cells.

## RESULTS AND DISCUSSION

### ACA observations on HOPG and PCP

Two types of carbonaceous substrates were adopted to conduct the ACA measurements. The first one is HOPG due to its high chemical purity, high density, ultra-flat surface and high degree of graphitization (Supplementary Fig. 1). The as-received HOPG was first cleaned by the well-known ‘Scotch Tape’ method, which has been widely employed to prepare single- or few-layer graphene [27]. HOPG exhibits a flat and shiny surface after the ‘Scotch Tape’ cleaning (inset of Fig. 1d) and XPS results further reveal a clean surface without functional organic groups, such as  $-\text{OH}$  or  $\text{C}=\text{O}$  (Supplementary Fig. 2). A  $\text{Li}_{\text{liq}}$  droplet was then deposited on the HOPG surface, while the HOPG was placed on a hot plate with a temperature of  $\sim 225^\circ\text{C}$ . The whole process can be seen in Supplementary Movie 1. Surprisingly, the ACA is as small as  $73^\circ$  (Fig. 1d).

To check this experiment against theory, an *ab initio* molecular dynamics simulation was performed with a molten Li droplet (54 Li atoms)/graphite (432 C atoms, two-layered graphene) setup to prove that a clean (002) surface of graphite is intrinsically lithiophilic at 500 K. Figure 1e presents the trajectories of the Li and carbon atoms of the last 1000 steps of the simulation. As previously discussed, this system consists of the  $\alpha$  (graphite),  $\beta$  ( $\text{Li}_{\text{liq}}$ ) and  $\delta$  (lithium vapor phase) phases, although the equilibrium vapor pressure of Li is extremely low at this temperature. The C atoms of graphite are allowed to vibrate, which presents a *c*-direction preference, but, interestingly, the  $\text{Li}_{\text{liq}}$  exhibits a layered-

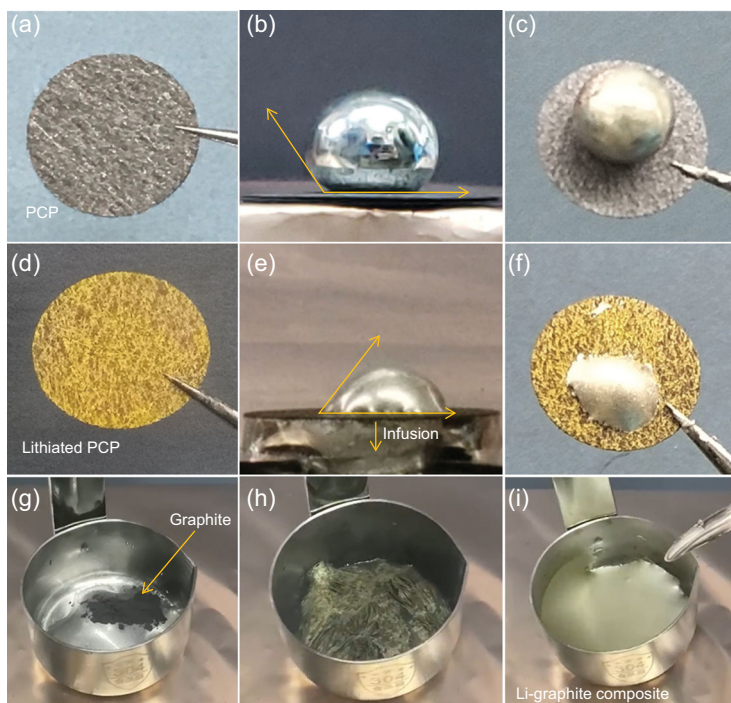
like atomic structure near the contact interface even though in a liquid state. The highly delocalized  $\pi$ -bonds of graphene enable Li atoms to wander around, but they still bind together due to the strong Li-Li affinity, which implies a more ‘physical’ character than chemical bonding for the Li atoms in contact with the graphene sheet. The ACA is observed to be  $\sim 62^\circ$ , which is similar to what we observed in the HOPG experiment above. The Li/lithiated graphite configuration was also investigated in the same manner with *ab initio* molecular dynamics (MD), which possess almost the same ACA, as shown in Supplementary Fig. 3. This confirms that both  $\text{C}_6$  and  $\text{LiC}_6$  are intrinsically (thermodynamically) lithiophilic and prefer to be enveloped by  $\text{Li}_{\text{liq}}$  rather than the vapor phase, when having a clean surface.

Experimentally, upon removing the Li droplet@HOPG from the hot plate, the Li droplet solidified quickly. From the top view, it is clear that Li has spread on the HOPG surface, as outlined by the dotted line in Fig. 1f. Interestingly,  $\text{Li}_{\text{BCC}}$  glued so firmly onto the HOPG that it was difficult to separate the  $\text{Li}_{\text{BCC}}$  from the HOPG. We had to forcefully peel off the  $\text{Li}_{\text{BCC}}$  from the HOPG using tweezers while the top layers of the HOPG were still adhered to the  $\text{Li}_{\text{BCC}}$  (Supplementary Movie 2). The adhered layers showed a brilliant yellow color (Fig. 1g), suggesting the formation of  $\text{LiC}_6$ : the stage-1 Li-graphite intercalation compounds (Li-GICs). This phenomenon corresponds to the intercalation of Li into graphite layers in the interior of the HOPG. We propose that HOPG is intrinsically lithiophilic and Li can penetrate the graphite layers underneath the top surface of HOPG through the grain boundaries and/or in-plane defects of the graphite layers and lead to a spontaneous Li intercalation process, which further promotes the spreading of  $\text{Li}_{\text{liq}}$  on HOPG, as schematically described in Fig. 1h.

### Transition from lithiophobicity to superlithiophilicity of PCP and graphite powder

Our conclusion that graphite is intrinsically lithiophilic seems to contradict with previous experiments that found  $\text{Li}_{\text{liq}}$  cannot wet PCP [22]. This prompted us to gain further understanding of the effect of surface chemistry, substrate topographic features and competing reactive dynamics ( $\text{C}_6 \rightarrow \text{LiC}_6$  together with  $\text{Li}_{\text{liq}} \rightarrow \text{Li}_2\text{O}/\text{Li}_2\text{CO}_3$ ). As shown in Fig. 2a and b, the ACA with PCP is as large as  $142^\circ$  (measurement process shown in Supplementary Fig. 4 and Supplementary Movie 3), even though PCP consists of mainly graphitic carbon fibers (XRD





**Figure 2.** Li wettability of PCP, lithiated PCP and graphite powder. ACA measurements of (a, b) PCP and (d, e) lithiated PCP. Digital photos of a Li droplet on (c) PCP and (f) lithiated PCP after cooling down to room temperature. The infiltration and penetration of the Li droplet into the lithiated PCP framework occur in 2 seconds. (g–i) The process of mixing Li and graphite powder under mechanical stirring in which the stirring plays a critical role in promoting the lithiation and uniform distribution of lithiated graphite in Li.

patterns in Supplementary Fig. 5). We then moved Li droplet@PCP from the hot plate and observed that the solidified Li on the PCP is not as ‘shiny’ as the starting droplet (Fig. 2c). We then ion-milled the surface of the lithium droplet to measure the depth of the impurities. It turned out that the impurity of  $\text{Li}_2\text{O}$  can still be detected even after ion-milling 200 nm away, indicating a strong reaction of  $\text{Li}_{\text{liq}}$  with trace impurities in the glovebox (Supplementary Fig. 6). A trace amount of air in the glovebox and functional groups on the PCP would react with  $\text{Li}_{\text{liq}}$  and form Li oxides, carbonates or nitrides. These products can slow down the Li intercalation into PCP by the blockage of  $\text{Li}^+$  or electron transfer, which act as wetting barriers on the PCP surface and enhance the lithiophobic behavior.

We then studied the spreading behavior of the Li droplet on the pre-lithiated PCP. The pre-lithiation was conducted by floating the PCP on top of molten  $\text{Li}_{\text{liq}}$  to increase the contact area. The gravity and inertia of a small piece of PCP floating on top of a large liquid-metal pool were sufficient to break the  $\text{Li}_2\text{O}/\text{Li}_2\text{CO}_3$  scale. As expected, PCP gradually became yellow and a piece of lithiated but still porous PCP<sub>lithiated</sub> was obtained (Supplementary Movie 4

and Fig. 2d). XRD measurement confirmed that  $\text{LiC}_6$  was the main phase in PCP<sub>lithiated</sub> (Supplementary Fig. 7). ACA measurement was then carried out by depositing another  $\text{Li}_{\text{liq}}$  drop onto the new surface of PCP<sub>lithiated</sub>. Surprisingly, a much smaller ACA was found compared to pristine PCP. Moreover, Li infused into the pores and even penetrated through the whole porous substrate extremely rapidly, in 2 seconds (Fig. 2e and f, and Supplementary Movie 5). All the observations thus supported the conclusion that PCP changed from lithiophobic to superlithiophilic due to the phase change ( $\text{C}_6 \rightarrow \text{LiC}_6$ ) and prevalence of the chemically reducing party, even though the bulk surface morphology of  $\text{LiC}_6$  is still rougher than HOPG. As evidenced by the XPS result of PCP (Supplementary Fig. 8), 10% of the surface was covered by O-containing groups. Some surface defect groups would surely become unstable as  $U \rightarrow 0$  versus  $\text{Li}^+/\text{Li}$ , and can be transformed in a time-dependent manner. The whole transition process and infiltration of  $\text{Li}_{\text{liq}}$  into PCP<sub>lithiated</sub> are schematically illustrated in Supplementary Fig. 9.

Graphite powders were further adopted to investigate the Li–graphite wettability (Supplementary Fig. 10). When initially sprinkled onto the  $\text{Li}_{\text{liq}}$  surface, just like the PCP, the graphite powders floated (Fig. 2g), showing apparent lithiophobicity. But, under mechanical stirring, the  $\text{Li}_2\text{O}/\text{Li}_2\text{CO}_3$  scales broke and the graphite powder gradually turned bright yellow (Fig. 2h), and then the lithiated graphite powders were sucked into the  $\text{Li}_{\text{liq}}$  bulk. The surface color thus changed sequentially from black (sprinkled  $\text{C}_6$ )  $\rightarrow$  bright yellow (sprinkled  $\text{LiC}_6$ )  $\rightarrow$  silver ( $\text{LiC}_6$  pulled inside, with  $\text{Li}_{\text{liq}}$  back on top, Supplementary Fig. 11), and the lithiated graphite powders could be uniformly dispersed into the liquid Li (Fig. 2i and Supplementary Movie 6), which is further revealed by the scanning electron microscopy (SEM) images and its corresponding EDX (Supplementary Fig. 12), indicative of a lithiophobicity–superlithiophilicity transition by Li intercalation. In contrast, without stirring, the lithiation and dispersion of the graphite powder were much slower.

The keys to the seemingly paradoxical reactive-wetting behavior are thus the competition between two reactions:  $\alpha$ -side reducing  $\text{C}_6 \rightarrow \text{LiC}_6$  and associated surface-chemistry change versus  $\beta$ -side oxidative  $\text{Li}_{\text{liq}} \rightarrow \text{Li}_2\text{O}/\text{Li}_2\text{CO}_3$ , in a non-ideal environment with oxidative gaseous species. Starting with the initial PCP, certain  $\alpha$ -side surface impurities or chemical groups can pin the contact line, causing contact-line hysteresis. (But these surface chemical groups are not immortal and must have their own electrochemical-stability windows, like any electrolyte molecules or salt anions [26].) A slower  $\text{Li}_{\text{liq}}$  spreading due to the ‘dirtier’ surfaces of

PCP compared to HOPG with more pinning sites [28], plus the longer distance to cover due to the porous geometry of PCP, cause the competing reaction  $\text{Li}_{\text{liq}} \rightarrow \text{Li}_2\text{O}/\text{Li}_2\text{CO}_3$  to catch up, forming nonconductive solid oxide scales covering  $\text{Li}_{\text{liq}}$  that impede further spreading and intercalation. We note that, at  $\sim 225^\circ\text{C}$  and  $U \sim 0\text{ V}$ ,  $\text{Li}_{\text{liq}}$  and even lithiated PCP are very reducing and super-attractive to mobile  $\text{O}_2$ ,  $\text{CO}_2$  gases. Given enough time, in practical experiments, the formation of oxide/carbonate scales on  $\text{Li}_{\text{liq}}$  and even the lithiated PCP surface is inevitable. The only way to overcome such a defense is for  $\text{Li}_{\text{liq}}$  to rush in quickly enough and expel the  $\text{O}_2/\text{CO}_2$ -containing  $\delta$  (vapor) phase completely (defined as 'Blitzkrieg').

To see how this is done, consider that, for lithiated PCP, some of the surface chemical groups are electrochemically unstable ( $\sim 0.1\text{ V}$  versus  $E^0_{(\text{Li}^+/\text{Li}^0)}$ ) and would be removed or reconfigured if the substrate is kept reducing enough and if a free electron can tunnel to the surface. This causes  $\text{LiC}_6$  itself to be lithiophilic ( $73^\circ$ ), which allows fast spreading of  $\text{Li}_{\text{liq}}$ , driving out the oxidative gases quickly and plugging the pores, maintaining even more reducing ambience. Vice versa, successful oxidative defense would slow down the contact line and recruit more oxidative  $\text{O}_2$ ,  $\text{CO}_2$  to the contact lines and to the liquid-Li surfaces, which further slows down the spreading until the lines no longer move at all, while the open gas pores maintain percolation to the outside. In other words, both oxidative defense and reducing 'Blitzkrieg' attack dynamics are self-reinforcing. A successful 'Blitzkrieg' attack will reduce the nearby fibers to a more reducing potential ( $U \sim 0\text{ V}$ ) to exceed the thermodynamic electrochemical-stability window of the surface chemical groups by solid-state diffusion inside the graphite, and convert these groups with free electrons before the mobile  $\text{O}_2$ ,  $\text{CO}_2$  gases can come in to form a passivating tunneling barrier, which will facilitate future *Blitzkrieg*. We also note that liquid-metal infiltration greatly improves the electronic percolation of the PCP as well.

In the graphite-powder experiment, mechanical stirring plays a crucial role such that, if the  $\text{Li}_2\text{O}/\text{Li}_2\text{CO}_3$  scales are broken and pure  $\text{Li}_{\text{liq}}$  can get into true contact with a graphite powder, Li intercalation occurs, leading to the phase change from  $\text{C}_6$  to  $\text{LiC}_6$  and complete envelopment of a  $\text{LiC}_6$  particle by  $\text{Li}_{\text{liq}}$  (can happen if  $\text{ACA} < 90^\circ$ ), resulting in the random-walk dispersion and homogenous distribution of  $\text{LiC}_6$  particles in the Li matrix. On the other hand, without mechanical stirring, graphite powder floats on the liquid Li and intercalation is pretty slow.

To summarize, in the case of carbonaceous materials, we find that, with a more reducing

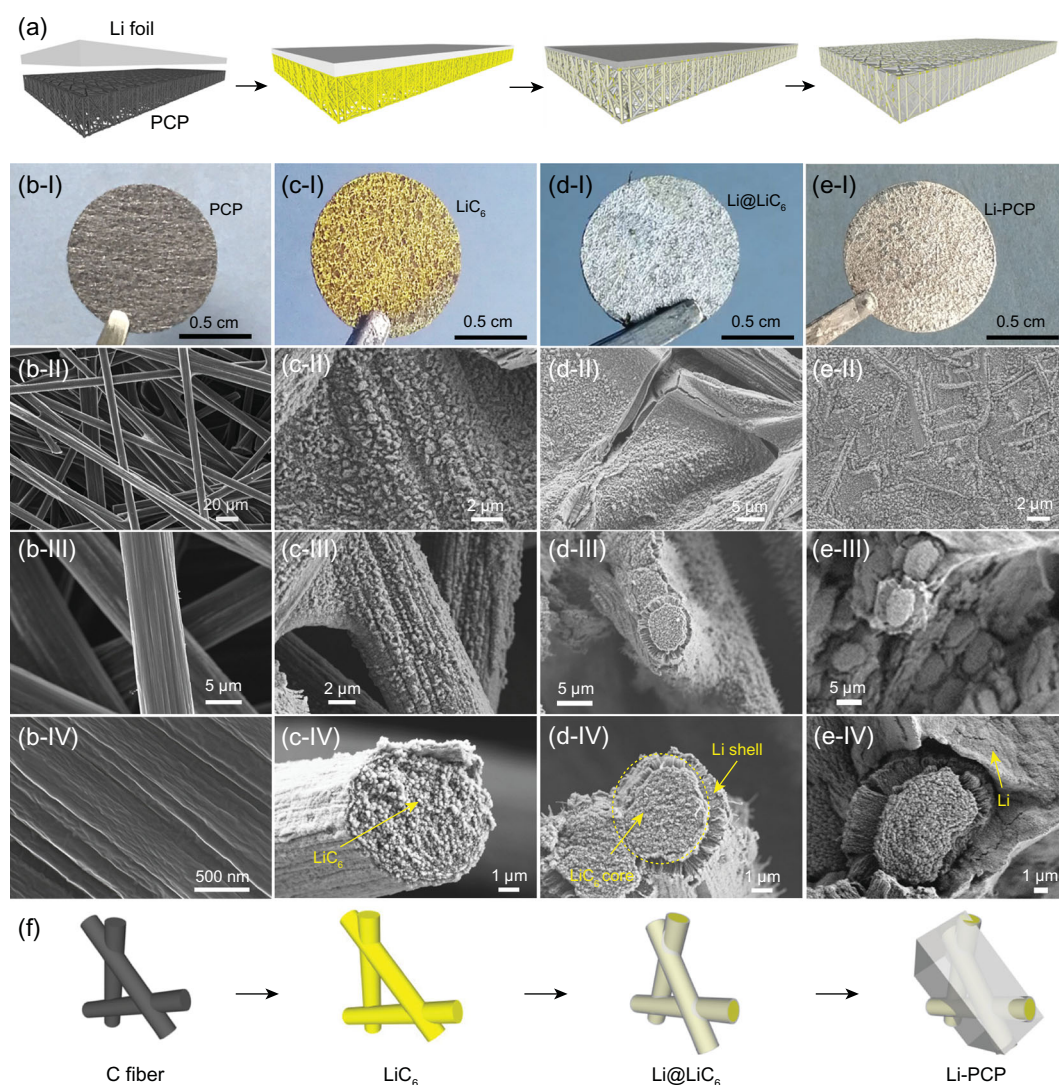
electrode potential (lower  $U^\alpha$ ), a more compact and cleaner initial surface (HOPG), mechanical agitation of  $\text{Li}_{\text{liq}}$  that breaks the surface oxide and lower  $\text{PO}_2$ ,  $\text{PCO}_2$  fugacities facilitate lithiophilicity and can even induce superlithiophilic behavior. On the other hand, with a dirtier and more tortuous initial surface (PCP), a more oxidative initial potential of the carbonaceous substrate and a higher  $\text{PO}_2$ ,  $\text{PCO}_2$  fugacities facilitate apparent lithiophobicity.

## Morphology evolution of Li-PCP composite

The fundamental understandings above enable us to develop a new approach to prepare self-standing Li-PCP composite. As illustrated in Fig. 3a, a piece of Li metal was pressed onto the surface of PCP and placed onto a hot plate in a glovebox. We can observe the significant color change of PCP from black to yellow and then metallic gray, demonstrating the successful formation of  $\text{LiC}_6$  and Li-PCP composite. Note that, according to our understanding, the mechanical pressing and the fact that the whole piece is collectively reduced assist the progress of the chemically reducing attack. The microstructural evolution was characterized by SEM. Figure 3b confirms that PCP was made of 1D fibers with an average diameter of  $5\ \mu\text{m}$ . The fiber surface is smooth and the whole structure is highly porous, with a porosity of 80%. Such a high porosity is favorable for storing large amounts of  $\text{Li}_{\text{BCC}}$  in the fabricated Li-PCP composite, if the oxidative 'Guerrilla warfare' defense can be overwhelmed and  $\text{Li}_{\text{liq}}$  can expel the vapor phase completely and shut off the percolating pores.

Li started to react with the PCP when the Li-PCP bilayer structure was placed on a hotplate and the color of the PCP turned to yellow (Fig. 3c). This corresponds to the formation of  $\text{LiC}_6$ . SEM images in Fig. 3c show that the fiber surface became much rougher with numerous particles, although the whole fiber and porous structure were maintained well after the lithiation. According to our understanding, a freshly formed  $\text{LiC}_6$  is superlithiophilic [29]. With more Li incorporated, Li started to grow along the  $\text{LiC}_6$  fiber, forming a core-shell structure with  $\text{LiC}_6$  fiber as the core and excessive Li as the shell ( $\text{Li@LiC}_6$ , Fig. 3d). In the final step, Li on the top layer was fully infused into the carbon framework and  $\text{LiC}_6$  fibers were embedded into the Li so that the fibers became fillers in the Li matrix (Fig. 3e). From the whole observations, we proposed the mechanism for the Li-PCP composite process:  $\text{Li} + \text{PCP} \rightarrow \text{LiC}_6 \rightarrow \text{core-shelled Li@LiC}_6 \rightarrow \text{Li-PCP composite}$  (Fig. 3f). The transition from lithiophobicity to superlithiophilicity of PCP upon





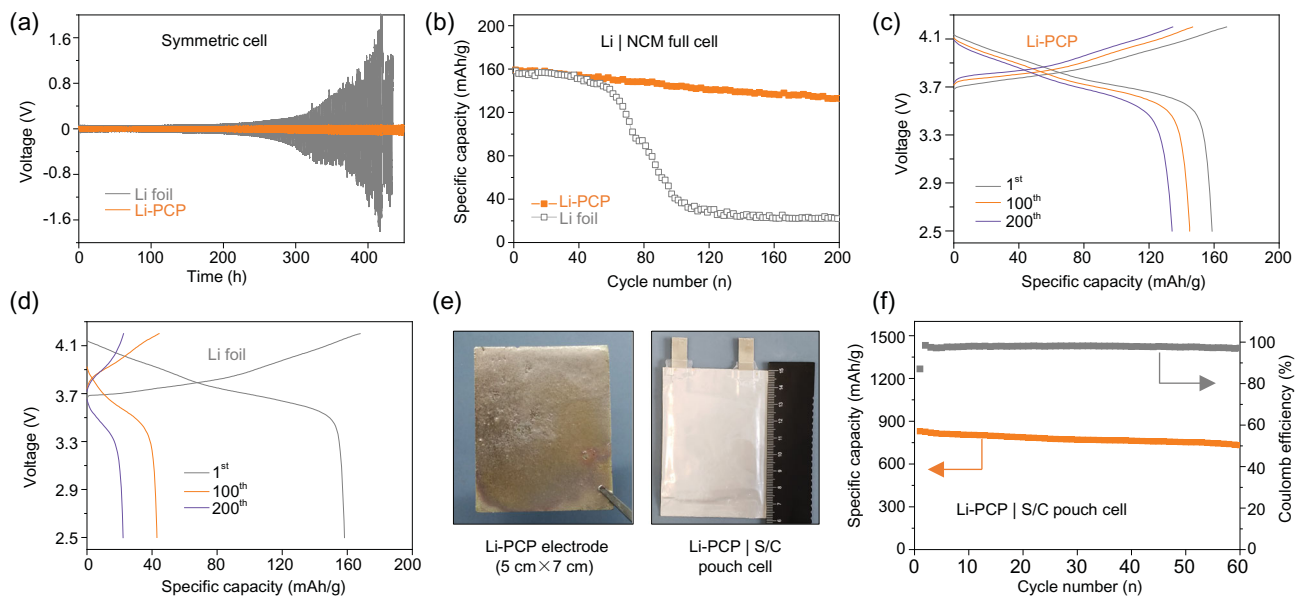
**Figure 3.** Structural evolution of the Li-PCP-composite fabrication process. (a) The schematic of the interaction between Li and PCP by adhering a piece of Li onto PCP upon heating. Photos and SEM images of (b) pristine PCP, (c) lithiated PCP, (d) Li@LiC<sub>6</sub> core-shelled structure and (e) the final Li-PCP composite product. (f) The structural evolution schematic of graphitic fibers upon reacting with Li.

lithiation is attributed to the change in the carbon surface, with many pinning impurities converted into more reduced (metallic) and less potentially pinning chemical groups. Due to the surface-chemistry change, the following Li infiltration can occur quickly, even in a *Blitzkrieg* fashion.

### Electrochemical performance of Li-PCP composite

Compared with the traditional methods of soaking or immersing PCP in a molten Li reservoir, the new approach can accurately control the weight ratio of Li in the Li-PCP composite, which is favorable for industrial-scale fabrication. To investigate the electrochemical performance of Li-PCP, here

we paired it with different counter-electrodes. The first setup was using Li-PCP in Li/Li symmetric cells where identical Li-PCP electrodes were used to assemble coin cells within a common carbonate electrolyte (1.0 M LiPF<sub>6</sub> in EC/DMC/EMC = 1:1:1 vol) while bare Li-foil cells were assembled as control. Figure 4a shows the representative voltage profiles of symmetric cells at 1.0 mA/cm<sup>2</sup> with a fixed cycling capacity of 1.0 mAh/cm<sup>2</sup>. We see that the hysteresis voltage of the control cell gradually increased from 60 to 200 mV after 130 cycles, while the Li-PCP cell remained stable over 200 cycles. Supplementary Fig. 13 compares the zoomed-in voltage profiles at the first cycle and after 130 cycles, which demonstrates that the Li-PCP cell exhibits flat plating/stripping curves while the control cell



**Figure 4.** Electrochemical cycling performance of the Li-PCP electrode. (a) Voltage profiles of Li-PCP and Li-foil symmetric cells with a fixed capacity of  $1.0 \text{ mAh/cm}^2$  at  $1.0 \text{ mA/cm}^2$ . (b) Cycling performance of Li-PCP/NCM and bare Li-foil/NCM cells at  $0.5^\circ\text{C}$ . Voltage profiles of (c) Li-PCP/NCM and (d) bare Li-foil/NCM at different cycles. (e) Digital images of a large piece of Li-PCP electrode and corresponding pouch cell with S/C cathode. (f) Cycling performance of the Li-PCP/S pouch cell.

cannot. When the cycling capacity was increased to  $3.0 \text{ mAh/cm}^2$ , the control-cell voltage started to diverge after only 45 cycles while the Li-PCP cell cycled stably after 100 cycles with a slightly enlarged hysteresis voltage (Supplementary Fig. 14). The Li-PCP cell also showed a better rate performance than the control cell (Supplementary Fig. 15). We further compared the cycling performance of the Li-PCP and pure Li foil with an areal capacity of  $3 \text{ mAh/cm}^2$  at  $3 \text{ mA/cm}^2$ , as shown in Supplementary Fig. 16. The voltage hysteresis of the symmetrical cell with the Li-PCP remained stable during the cycles, while that of the pure Li-foil cell increased rapidly. It is evident that Li-PCP composite has a better stability than bare Li foil, which is consistent with previous studies [30] that the conductive carbon framework could lower the local current density and the stable composite structure is favorable for addressing the volume-change issue upon repeated electrochemical plating/stripping.

The second setup was pairing Li-PCP with  $\text{LiNi}_{0.5}\text{Co}_{0.2}\text{Mn}_{0.3}\text{O}_2$  (NCM) cathode to assemble full cells (Fig. 4b). The control bare Li-foil/NCM and Li-PCP/NCM cells show the same performance at the beginning, delivering specific capacities of about  $150 \text{ mAh/g}$ . However, the bare Li/NCM cell faded after about 40 cycles and showed capacity nosediving after about 60 cycles. In contrast, the Li-PCP/NCM cell can give a much better stability that the reversible capacity maintained at  $130 \text{ mAh/g}$  over 200 cycles. In Fig. 4c, it is clear that the

Li-PCP/NCM cell shows similar voltage profiles from the 1st cycle to the 200th cycle and delivers comparable capacities. In sharp contrast, a bare Li/NCM cell gives a large voltage polarization and a capacity as small as  $25 \text{ mAh/g}$  after 200 cycles (Fig. 4d). Due to the facile synthesis approach, a large piece of Li-PCP ( $5 \times 7 \text{ cm}^2$ , Fig. 4e) has been successfully fabricated. A pouch-cell-type Li-PCP/ $\text{Li}_4\text{Ti}_5\text{O}_{12}$  (LTO) cell has been demonstrated, which shows long-term stability over 300 cycles while the control cell with bare Li metal fades after about 120 cycles (Supplementary Fig. 17). We further applied the large Li-PCP electrode in pouch-cell coupling with a sulfur/carbon (S/C) cathode. Here, a Li-PCP/S pouch cell with an areal capacity of  $\sim 3.0 \text{ mAh/cm}^2$  was assembled and showed a fairly stable cycle performance over 60 cycles at  $0.5^\circ\text{C}$  (Fig. 4f). In contrast, a bare  $\text{Li}_{\text{BCC}}$ /S cell shows a rapid capacity decay (Supplementary Fig. 18). This proves the versatility of the Li-PCP electrode in different Li-metal batteries.

## CONCLUSION

In summary, graphite is intrinsically lithiophilic if we allow the substrate to be fully reduced ( $\text{C}_6 \rightarrow \text{LiC}_6$ ) with fewer disruptions by oxidizing agents (air). This was revealed by the small ACA of the Li droplet on HOPG, the rapid infiltration of liquid Li into PCP and the full envelopment of graphite

powder by liquid Li, after the substrate is already fully lithiated and the potential drops to 0.05–0.1 V versus  $\text{Li}^+/\text{Li}$ . On the other hand, if the substrate has a high redox potential ( $\text{C}_6$ ), surface-pinning sites reinforced by the constant new arrivals of a trace amount of oxidizing agents can completely impede the spreading of Li metal. The apparent lithiophilicity of any substrate is therefore hypothesized to be local-potential-dependent and ambient-vapor-partial-pressure-dependent. A fully dense Li-graphite composite anode can be prepared with a controlled Li/C ratio using a simple thermal treatment and exhibits great stability in full-cell batteries against NCM, LTO, S/C.

## METHODS

### Experimental evaluation of the wettability

All the experiments were conducted in a glovebox with both  $\text{H}_2\text{O}$  and  $\text{O}_2$  concentrations below 0.1 ppm. Li foil was purchased from Tianjin Zhongneng Lithium Industry Co., Ltd. Before conducting the wetting experiment, impurities of lithium (mainly  $\text{Li}_2\text{O}$  and  $\text{Li}_2\text{CO}_3$ ) should be removed. The Li foil was first placed in a stainless-steel container on a hotplate at  $225^\circ\text{C}$ . After meltdown, a pair of stainless-steel tweezers were used to clamp the impurities away until the molten Li showed a smooth surface and looked shiny with a metal luster. Then the cleaned lithium droplets were transferred to the testing substrates, which were placed on a hotplate.

### Materials preparation

PCP was purchased from Toray Group (Toray paper 30, TGP-H-030). Before lithiated PCP preparation, the PCP was washed with diluted hydrochloric acid, deionized water and ethanol in sequence. Then the dried PCP was placed on the surface of the liquid lithium at  $225^\circ\text{C}$  and heated for several minutes. As soon as the PCP turned bright yellow, the lithiated PCP was separated from the liquid lithium.

For the preparation of the Li-PCP composite, we removed the impurities of the Li foil and then pressed it into the lithium foil in a glovebox. The clean lithium foil was soft and flexible. Thus, we were able to press the foil into the PCP with a Teflon roll. Then the lithium foil/PCP was placed on the hotplate ( $225^\circ\text{C}$ ). The weight ratio of the Li in the Li-PCP composite was  $\sim 65\%$  with a specific capacity of  $\sim 2000 \text{ mAh/g}_{\text{total}}$ .

The graphite powder was purchased from Shanshan Technology (artificial graphite) without any further treatment. The Li-graphite-powder

composite was prepared by mixing lithium foil and graphite powder in a stainless-steel container on a hotplate at  $225^\circ\text{C}$ . The graphite powder turned yellow first and gradually mixed evenly with the lithium with continuous stirring.

### Ab initio MD calculation

The *ab initio* MD calculations were performed using density functional theory, implemented in Vienna *ab initio* Simulation Package (VASP) [31,32]. The Perdew-Burke-Ernzerhof functional was adopted for the generalized gradient approximation (GGA) [33] to exchange-correlation potential. The energy cutoff was selected to be 460 eV.

The Crystallographic Information File (CIF) of the  $\text{Li}_{\text{BCC}}$  metal was downloaded from the website of Materialsproject.com. Based on the  $\text{Li}_{\text{BCC}}$  metal CIF file, a  $3 \times 3 \times 3$  super cell containing 54 Li atoms was created with Avogadro 1.2.0 [34], which was further converted into a POSCAR file via Pymatgen [35] (<http://pymatgen.org>). The POSCAR file, with an expanded system box of  $22.2 \times 25.6 \times 32 \text{ \AA}$ , was used as the VASP input, which was large enough to form a droplet in the MD calculation. After 1000 MD steps performed at 1000 K, a desired Li-metal droplet was built.

The CIF of the graphite was downloaded from the Materialsproject.com website and then expanded to a super cell using two-layered graphene (432 C atoms) and a simulation box of  $22.2 \times 25.6 \times 28 \text{ \AA}$ . After placing the as-prepared Li-metal droplet on top of the two-layered graphene with Pymatgen package, the system was run for 3000 steps at 500 K to achieve energy convergence. The atom trajectories of the last 1000 steps were dumped out as an XYZ file and then rendered with VMD 1.9.3 [36–41], from which the contact angle was approximately measured.

For the Li/ $\text{LiC}_6$  case, as the result shown in Supplementary Fig. 3, the *ab initio* MD calculation was conducted in the same way by replacing the two-layered graphene with a  $\text{LiC}_6$  super cell (300 C atoms and 50 Li atoms) created using the same method as in the Li/graphite case. The calculation process was the same as with the previous Li/graphite case.

### Materials characterization

A scanning electron microscope (sigma 300vp; Zeiss, Germany) operating at 3.0 kV was employed to characterize the morphology. A protect strategy was adopted to avoid the possible reactions between air-sensitive samples and the atmospheric environment by sealing them in an airtight container in a



glovebox for the transfer to the SEM equipment. X-ray diffraction patterns were recorded on a Bruker D8 Advance diffractometer equipped with a Cu-K $\alpha$  radiation source. XPS analysis was conducted on an American Thermo Fisher Scientific ESCALAB 50Xi to characterize the surface chemistry.

## Electrochemical measurement

Li/Li symmetric cells were assembled with Li-PCP or bare Li foil as both working and counter-electrodes. LTO electrodes were prepared by mixing LTO powder (80 wt%), carbon black (10 wt%) and PVDF (10 wt%) in N-methyl pyrrolidone (NMP) homogeneously. The slurry was coated on copper foil and dried at 80°C overnight. For the NCM electrode, NCM523 powder (90%), carbon black (5%) and PVDF (5%) were mixed together and then coated on aluminum foil and dried at 80°C. As for the S/C electrode, sulfur (80%) and carbon black (20%) were first homogeneously mixed and heated in a sealed can at 150°C. Then the obtained S/C mixture (80%) was further mixed with carbon black (10%) and LA-133 (10%). The slurry was cast onto the aluminum foil and dried at 50°C. All the electrodes were further roll pressed before being cut into circular disks.

All the coin cells were assembled with standard CR2025 coin-type in an Ar-filled glovebox with O<sub>2</sub> and H<sub>2</sub>O content below 0.1 ppm. The active mass loadings of the NCM and LTO electrodes are 10 and 15 mg/cm<sup>2</sup>, respectively. A sulfur cathode with a sulfur loading of 2.5 mg/cm<sup>2</sup> was used in the pouch cell. LiPF<sub>6</sub> in ethylene carbonate (EC)/dimethyl carbonate (DMC)/ethylmethyl carbonate (EMC) (1.0 M; v/v/v = 1:1:1) was used as the electrolyte for the Li/Li symmetric cells, Li/LTO and Li/NCM cells. Lithium bis(trifluoromethanesulfonyl)imide (LiTFSI) in 1,3-dioxolane (DOL)/1,2-dimethoxyethane (DME) (1.0 M; v/v = 1:1) with 2% LiNO<sub>3</sub> (DoDoChem) was employed as the electrolyte in the Li-S pouch cells. The negative/positive ratio (N/P ratio) in these full cells was ~3. These coin cells and pouch cells were cycled in a Neware multichannel battery tester (CT-4000).

## SUPPLEMENTARY DATA

Supplementary data are available at [NSR](#) online.

## FUNDING

W.L. and Y.H.H. acknowledge support from the National Key R&D Program of China (2018YFB0905400) and the National Natural Science Foundation of China (51802224 and

51632001). J.L. acknowledges support from the National Science Foundation of the United States (ECCS-1610806).

## AUTHOR CONTRIBUTIONS

W.L., J.D., J.L. and Y.H.H. conceived of the idea for the project. J.D., W.Y.W. and W.L. prepared the carbon samples and constructed the wettability tests. Y.H.Z. and J.L. conducted the theoretical computations. J.D. and T.R.W. prepared the Li-PCP, LTO and NCM electrodes, and conducted the battery tests. Y.X. and S.L. prepared the sulfur electrodes. J.D., Y.H.Z., W.L., J.L. and Y.H.H. prepared the manuscript.

**Conflict of interest statement.** None declared.

## REFERENCES

- Xin S, Chang Z and Zhang X *et al.* Progress of rechargeable lithium metal batteries based on conversion reactions. *Natl Sci Rev* 2017; **4**: 54–70.
- Lin D, Liu Y and Cui Y. Reviving the lithium metal anode for high-energy batteries. *Nat Nanotech* 2017; **12**: 194–206.
- Tikekar MD, Choudhury S and Tu Z *et al.* Design principles for electrolytes and interfaces for stable lithium-metal batteries. *Nat Energy* 2016; **1**: 16114.
- Li L, Basu S and Wang Y *et al.* Self-heating-induced healing of lithium dendrites. *Science* 2018; **359**: 1513–6.
- Chen L, Fan X and Ji X *et al.* High-energy Li metal battery with lithiated host. *Joule* 2019; **3**: 732–44.
- Zhang W, Zhuang HL and Fan L *et al.* A 'cation-anion regulation' synergistic anode host for dendrite-free lithium metal batteries. *Sci Adv* 2018; **4**: eaar4410.
- Liu F-Q, Wang W-P and Yin Y-X *et al.* Upgrading traditional liquid electrolyte via in situ gelation for future lithium metal batteries. *Sci Adv* 2018; **4**: eaat5383.
- Cheng X-B, Zhang R and Zhao C-Z *et al.* Toward safe lithium metal anode in rechargeable batteries: a review. *Chem Rev* 2017; **117**: 10403–73.
- Yao Y. Taming lithium metal through seeded growth. *Natl Sci Rev* 2017; **4**: 17–8.
- Fan X, Chen L and Borodin O *et al.* Non-flammable electrolyte enables Li-metal batteries with aggressive cathode chemistries. *Nat Nanotech* 2018; **13**: 715–22.
- Ding F, Xu W and Graff GL *et al.* Dendrite-free lithium deposition via self-healing electrostatic shield mechanism. *J Am Chem Soc* 2013; **135**: 4450–6.
- Zheng J, Engelhard MH and Mei D *et al.* Electrolyte additive enabled fast charging and stable cycling lithium metal batteries. *Nat Energy* 2017; **2**: 17012.
- Gao Y, Zhao Y and Li YC *et al.* Interfacial chemistry regulation via a skin-grafting strategy enables high-performance lithium-metal batteries. *J Am Chem Soc* 2017; **139**: 15288–91.
- Yang C-P, Yin Y-X and Zhang S-F *et al.* Accommodating lithium into 3D current collectors with a submicron skeleton towards long-life lithium metal anodes. *Nat Commun* 2015; **6**: 8058.
- Liu B, Zhang J-G and Xu W. Advancing lithium metal batteries. *Joule* 2018; **2**: 833–45.

16. Yang C, Fu K and Zhang Y *et al.* Protected lithium-metal anodes in batteries: from liquid to solid. *Adv Mater* 2017; **29**: 1701169.
17. Yin Y-C, Yu Z-L and Ma Z-Y *et al.* Bio-inspired low-tortuosity carbon host for high-performance lithium-metal anode. *Nat Sci Rev* 2019; **6**: 247–56.
18. Lin D, Liu Y and Liang Z *et al.* Layered reduced graphene oxide with nanoscale interlayer gaps as a stable host for lithium metal anodes. *Nat Nanotech* 2016; **11**: 626–32.
19. Mukherjee R, Thomas AV and Datta D *et al.* Defect-induced plating of lithium metal within porous graphene networks. *Nat Commun* 2014; **5**: 3710.
20. Huang S, Tang L and Najafabadi HS *et al.* A highly flexible semi-tubular carbon film for stable lithium metal anodes in high-performance batteries. *Nano Energy* 2017; **38**: 504–9.
21. Niu C, Pan H and Xu W *et al.* Self-smoothing anode for achieving high-energy lithium metal batteries under realistic conditions. *Nat Nanotechnol* 2019; **14**: 594–601.
22. Liang Z, Lin D and Zhao J *et al.* Composite lithium metal anode by melt infusion of lithium into a 3D conducting scaffold with lithiophilic coating. *Proc Natl Acad Sci USA* 2016; **113**: 2862–7.
23. Wang J, Wang H and Xie J *et al.* Fundamental study on the wetting property of liquid lithium. *Energy Storage Mater* 2018; **14**: 345–50.
24. De Gennes PG. Wetting: statics and dynamics. *Rev Mod Phys* 1985; **57**: 827–63.
25. Huang JY, Lo Y-C and Niu JJ *et al.* Nanowire liquid pumps. *Nat Nanotech* 2013; **8**: 277–81.
26. Goodenough JB and Kim Y. Challenges for rechargeable Li batteries. *Chem Mater* 2010; **22**: 587–603.
27. Novoselov KS, Geim AK and Morozov SV *et al.* Electric field effect in atomically thin carbon films. *Science* 2004; **306**: 666–9.
28. Meglio JMD. Contact angle hysteresis and interacting surface defects. *Europhys Lett* 1992; **17**: 607–12.
29. Shi P, Li T and Zhang R *et al.* Lithiophilic LiC<sub>6</sub> layers on carbon hosts enabling stable Li metal anode in working batteries. *Adv Mater* 2019; **31**: 1807131.
30. Zhang R, Chen X and Shen X *et al.* Coralloid carbon fiber-based composite lithium anode for robust lithium metal batteries. *Joule* 2018; **2**: 764–77.
31. Kresse G and Furthmüller J. Efficient iterative schemes for ab initio total-energy calculations using a plane-wave basis set. *Phys Rev B* 1996; **54**: 11169–86.
32. Kresse G and Furthmüller J. Efficiency of ab-initio total energy calculations for metals and semiconductors using a plane-wave basis set. *Comput Mater Sci* 1996; **6**: 15–50.
33. Perdew JP, Burke K and Ernzerhof M. Generalized gradient approximation made simple. *Phys Rev Lett* 1996; **77**: 3865–8.
34. Hanwell MD, Curtis DE and Lonie DC *et al.* Avogadro: an advanced semantic chemical editor, visualization, and analysis platform. *J Cheminform* 2012; **4**: 17.
35. Ong SP, Richards WD and Jain A *et al.* Python Materials Genomics (pymatgen): a robust, open-source python library for materials analysis. *Comput Mater Sci* 2013; **68**: 314–9.
36. Humphrey W, Dalke A and Schulten K. VMD: visual molecular dynamics. *J Mol Graph* 1996; **14**: 33–8.
37. Stone JE, Gullingsrud J and Schulten K. A system for interactive molecular dynamics simulation. In *Proceedings of the 2001 Symposium on Interactive 3D Graphics* 2001; 191–4.
38. Eargle J, Wright D and Luthey-Schulten Z. Multiple alignment of protein structures and sequences for VMD. *Bioinformatics* 2006; **22**: 504–6.
39. Frishman D and Argos P. Knowledge-based protein secondary structure assignment. *Proteins* 1995; **23**: 566–79.
40. Varshney A, Brooks FP and Wright WV. Computing smooth molecular surfaces. *IEEE Comput Grap Appl* 1994; **14**: 19–25.
41. Sanner MF, Olson AJ and Spehner J-C. Fast and robust computation of molecular surfaces. In *Proceedings of the Eleventh Annual Symposium on Computational Geometry* 1995; 406–7.

Supplementary Materials for  
**Is graphite lithiophobic or lithiophilic?**

Jian Duan†, Yuheng Zheng†, Wei Luo\*, Wangyan Wu, Tengrui Wang, Yong Xie, Sa Li, Ju Li\*  
and Yunhui Huang\*

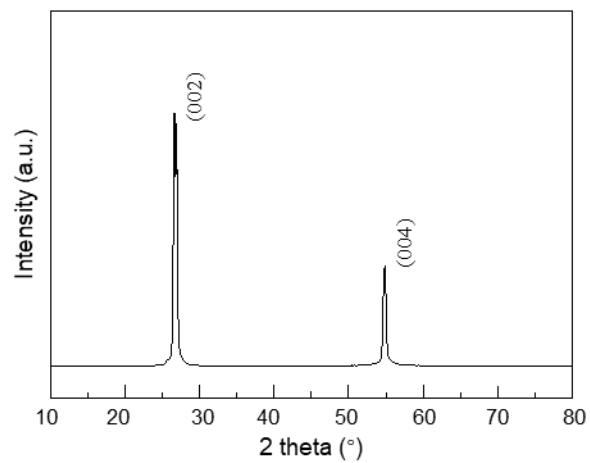
\*Correspondence to: weiluo@tongji.edu.cn (W.L.); liju@mit.edu (J.L.); and  
huangyh@tongji.edu.cn (Y.H.H.)

†Equal contribution

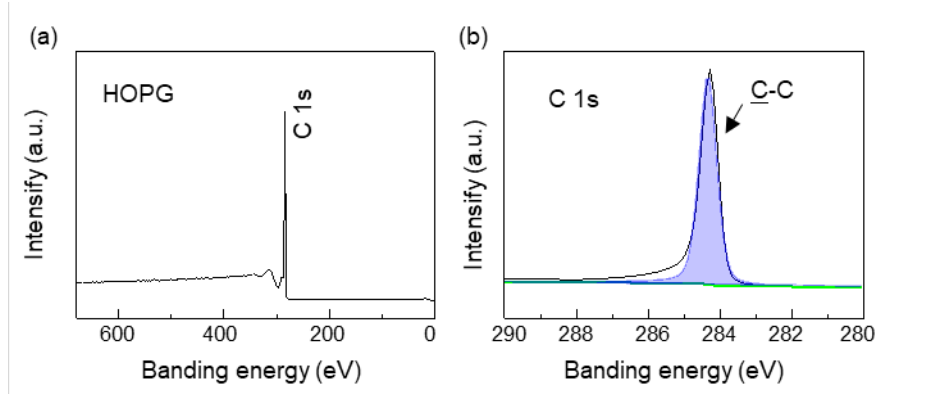
**This PDF file includes:**

Figs. S1 to S18  
Captions for Movies S1 to S6

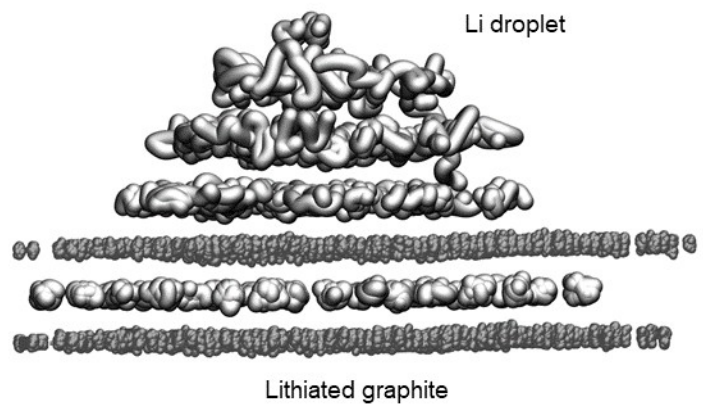




**Fig. S1.** X-ray diffraction pattern of the highly oriented pyrolytic graphite (HOPG).

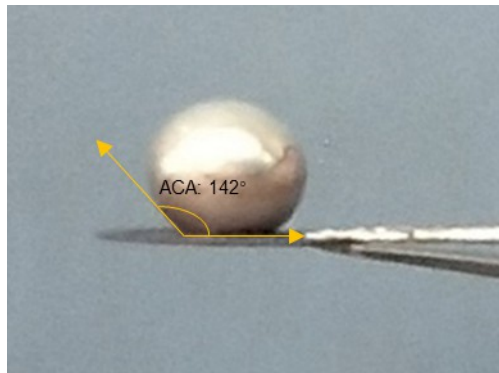


**Fig. S2. Characterization of the surface chemistry of HOPG.** (a) Survey XPS spectra; (b) High-resolution XPS spectrum of C1s for HOPG.

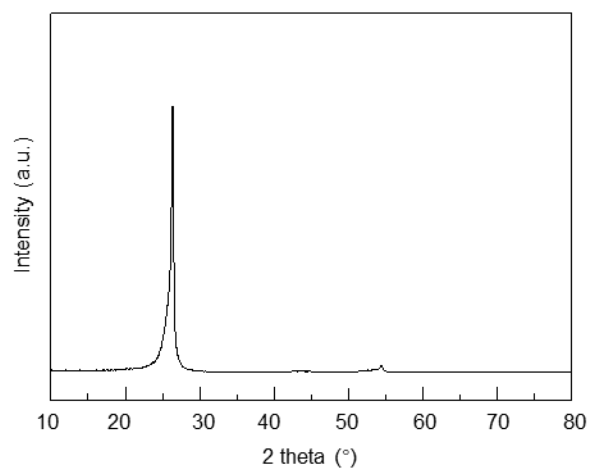


**Fig. S3.** Ab-MD calculation of a Li droplet/lithiated graphite system at 500K.

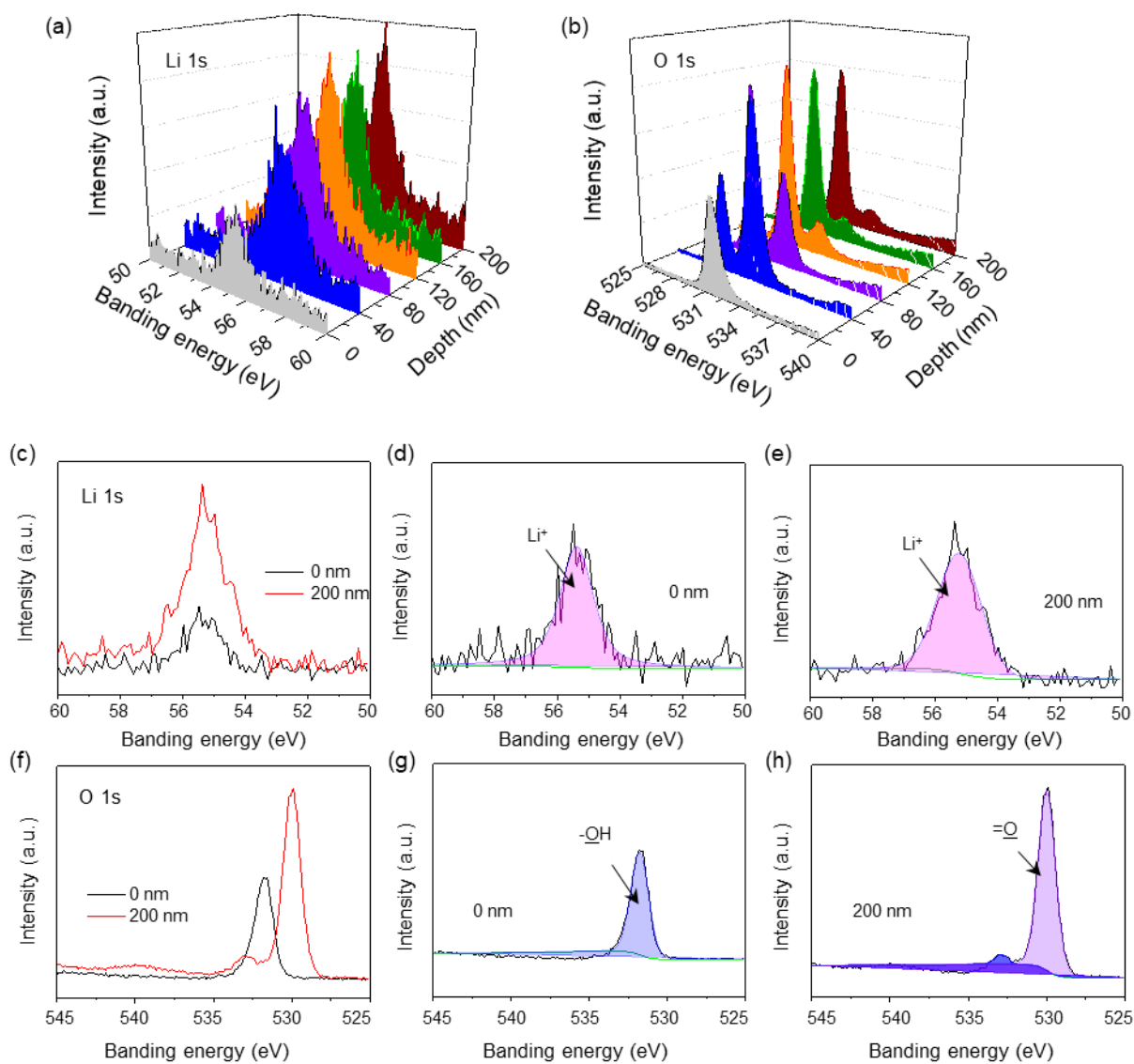




**Fig. S4.** Apparent contact angle (ACA) of lithium droplet on PCP. The ACA is as large as  $142^\circ$ , indicating PCP is lithiophobic.

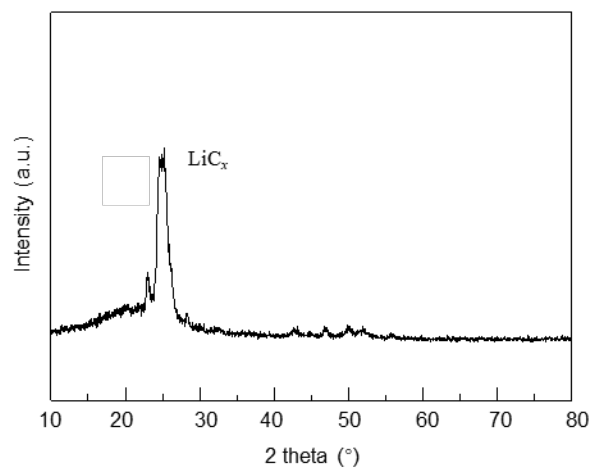


**Fig. S5.** X-ray diffraction pattern of PCP, showing it highly graphitic structure.

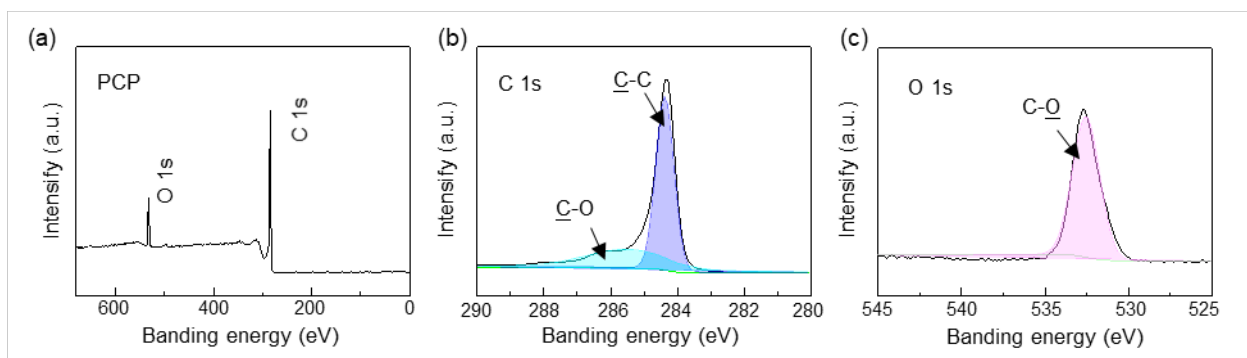


**Fig. S6.** XPS spectra of cleaned Li metal after storing in a glovebox for half an hour. Li 1s XPS spectra of cleaned Li metal at depth of (a) 0, 40, 80, 120, 160 and 200 nm, (c) 0 and 200 nm, (d) 0 nm and (e) 200 nm. O 1s XPS spectra of cleaned Li metal at depth of (b) 0, 40, 80, 120, 160 and 200 nm, (f) 0 and 200 nm, (g) 0 nm and (h) 200 nm.

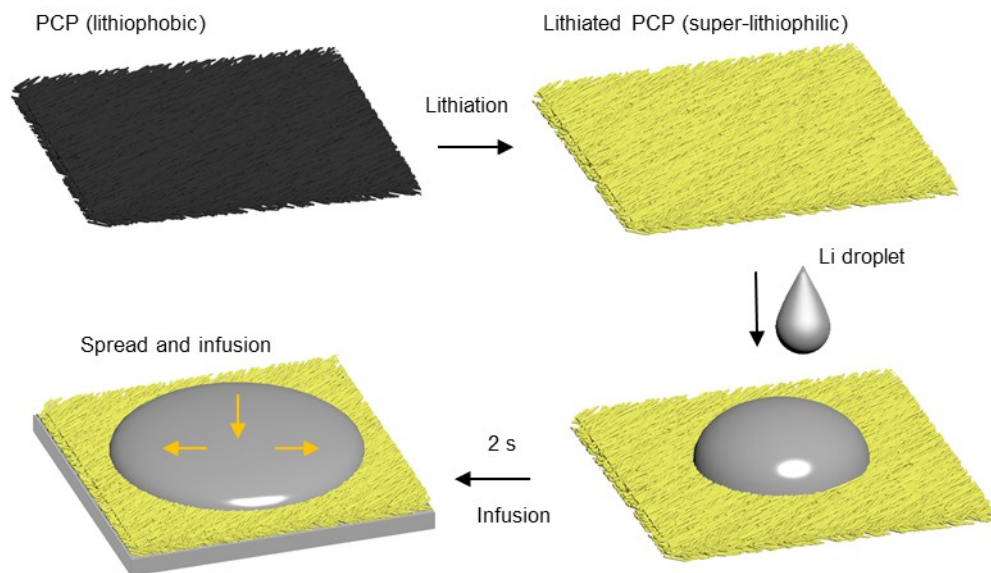




**Fig. S7.** X-ray diffraction pattern of lithiated PCP, showing the successful lithiation of the PCP.

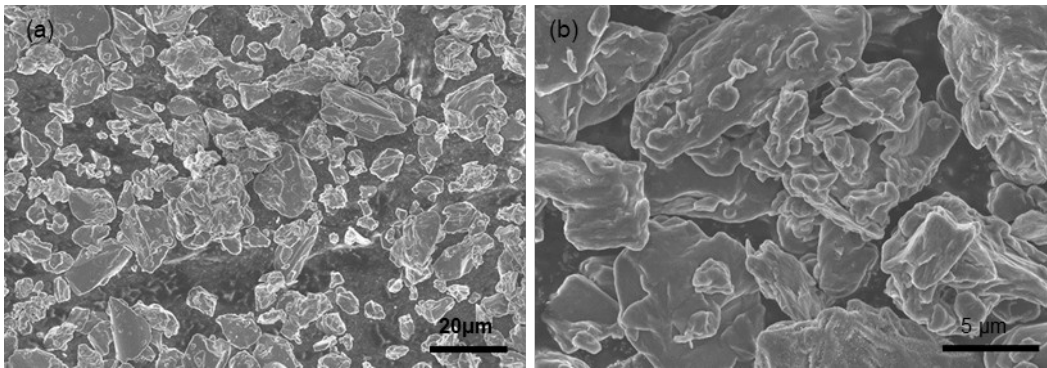


**Fig. S8. Characterization of the surface chemistry of PCP.** Survey XPS spectra (a) and high-resolution XPS spectrum of C1s (b) and O1s (c) for PCP.

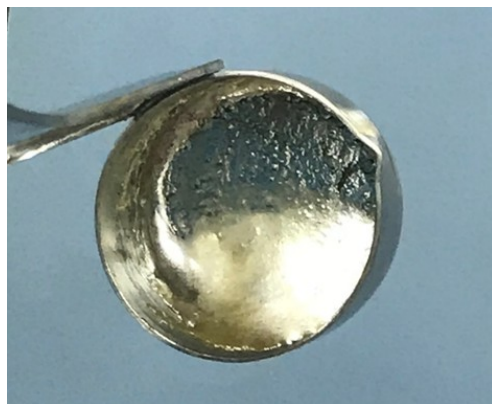


**Fig. S9.** Schematic of the transition process and infiltration of  $\text{Li}_{\text{liq}}$  into lithiated PCP.

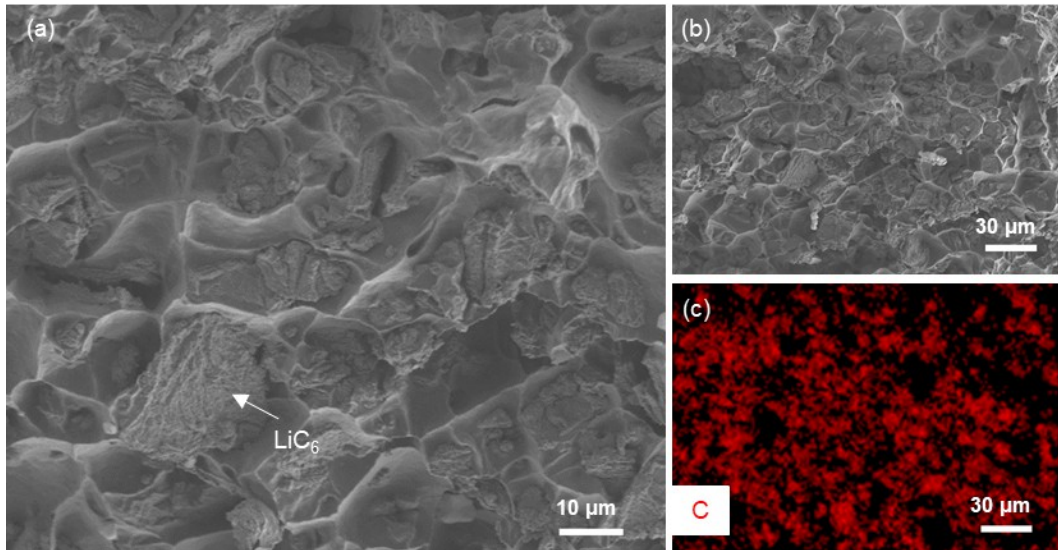




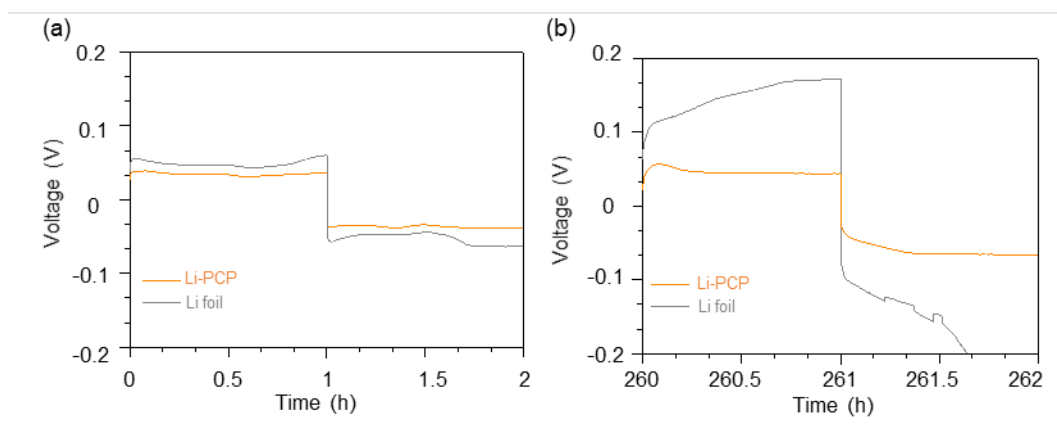
**Fig. S10.** SEM images of the graphite powder at different magnifications.



**Fig. S11.** Digital image of the Li<sub>liq</sub>-graphite powder composite.

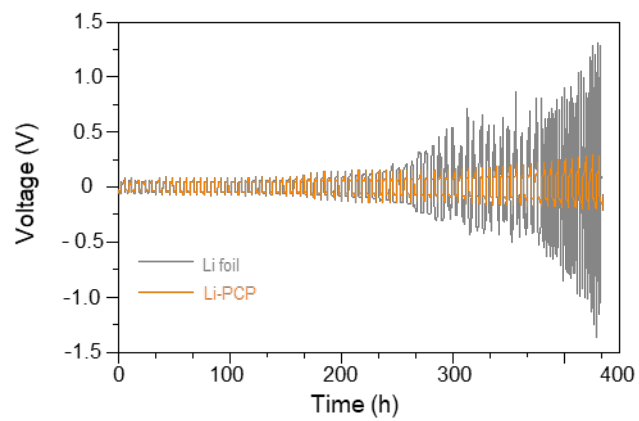


**Fig. S12.** (a, b) SEM and (c) corresponding EDX images of the Li-graphite powder composite.

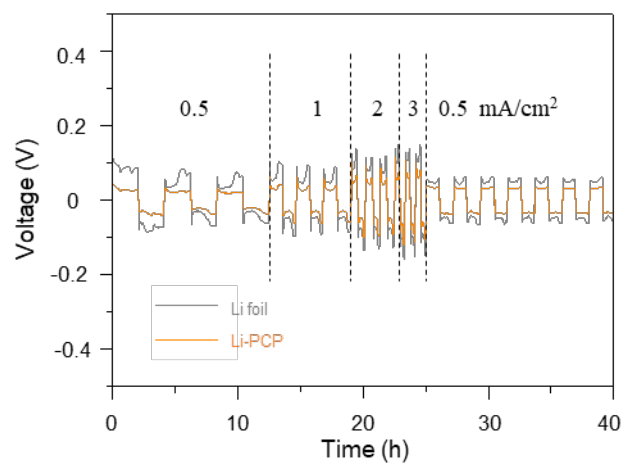


**Fig. S13.** Enlarged voltage profiles of (a) the first 2h and (b) the 260 – 262 h of the Li-PCP and Li foil symmetric cells at 1.0 mA/cm<sup>2</sup>.

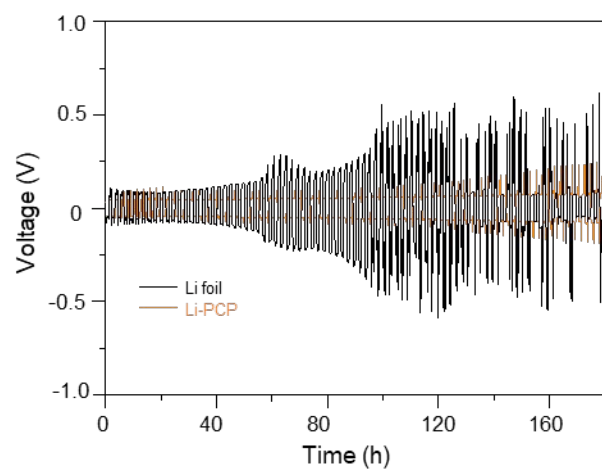




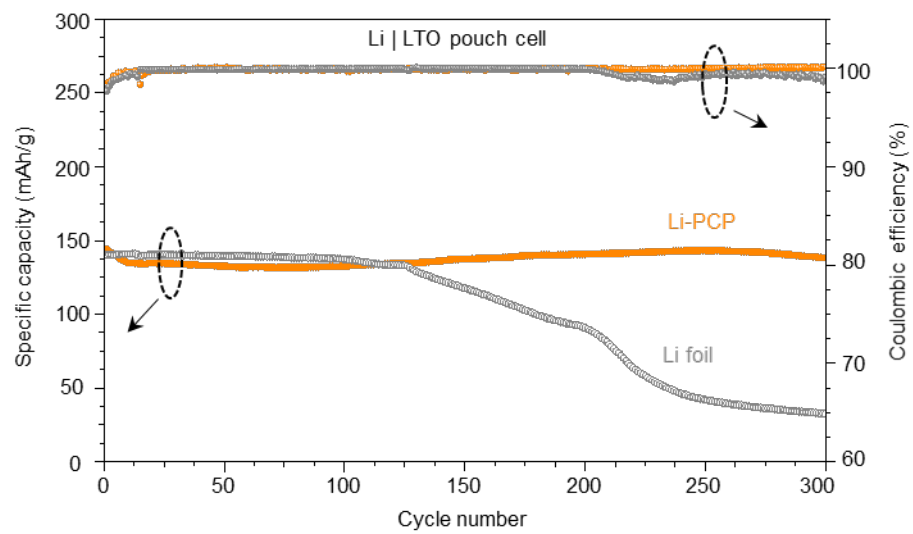
**Fig. S14.** Cycling performance of Li-PCP and Li foil symmetric cells at 1.0 mA/cm<sup>2</sup> with a fix capacity of 3.0 mAh/cm<sup>2</sup>.



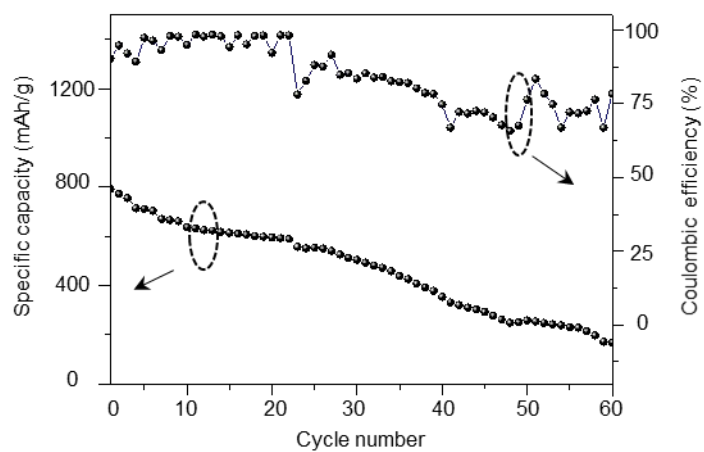
**Fig. S15.** Rate performance of Li-PCP and Li foil symmetric cells.



**Fig. S16.** Voltage profiles of symmetric cells with pristine Li foils or Li-PCP as electrodes tested with an areal capacity of 3 mAh/cm<sup>2</sup> at 3 mA/cm<sup>2</sup>.



**Fig. S17.** Cycling performance of Li-PCP/LTO and Li foil/LTO pouch cell at 160 mA/g.



**Fig. S18.** Cycling performance of Li foil/S pouch cell at 0.5C.



Movie S1:

The apparent contact angle test between HOPG and liquid Li droplet shows that graphite is lithiophilic.

Movie S2:

The process of removing solidified Li droplet from HOPG, showing that lithium tightly adhered to HOPG.

Movie S3:

The apparent contact angle test between porous carbon paper (PCP) and liquid Li droplet shows that PCP shows lithiophobic. The liquid Li droplet tend to be “ball” on the surface of PCP with large apparent contact angle.

Movie S4:

The porous carbon paper (PCP) gradually turned to brilliant yellow during the synthesis process of the lithiated PCP.

Movie S5:

The apparent contact angle measurement of the lithiated PCP and lithium show that the lithiated PCP is superlithiophilic, indicating the pre-lithiated process is the key factor for the transformation of PCP from lithiophobicity to lithiophilicity.

Movie S6:

With the aid of mechanical stirring, the surface passivation of lithium is broken and the lithiated process of graphite powder is accelerated. Finally, a uniformly Li-graphite powder composite is obtained.